

DWM D4DT5-220 X AWM/D Tank aggregate

Specifications

| | |
|-------------------------|-------------------------------------|
| Marque | DWM |
| Le type | D4DT5-220 X AWM/D Tank aggregate |
| Réfrigérant | Freon |
| kW at -10°C/+40°C | 38,7* |
| kW at -20°C/+40°C | 31,5 |
| kW at -30°C/+40°C | 19,9 |
| kW at -40°C/+40°C | 11,7 |
| kW at -45°C/+40°C | 8,52 |
| Sur le châssis en acier | ✓ |
| Séparateur d'huile | ✓ |
| Voyant | ✓ |
| m3 / h | 84,7 |
| Remarques | *Cooling capacity at -15°C/+40°C |
| Weight | 231 kg |
| Tailles | 1100x780x1200 mm (LxWxH) |
| Stock | 1 |

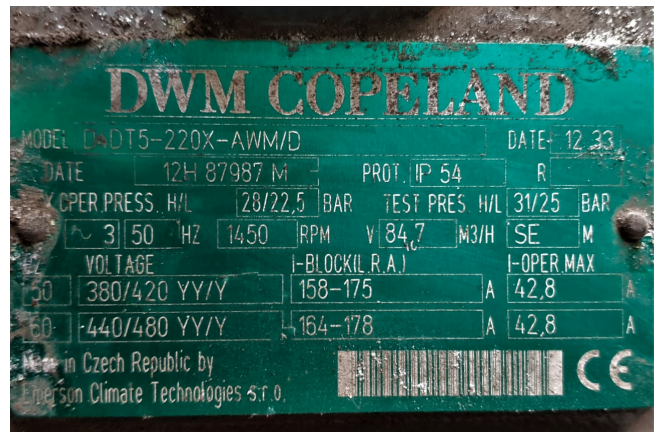
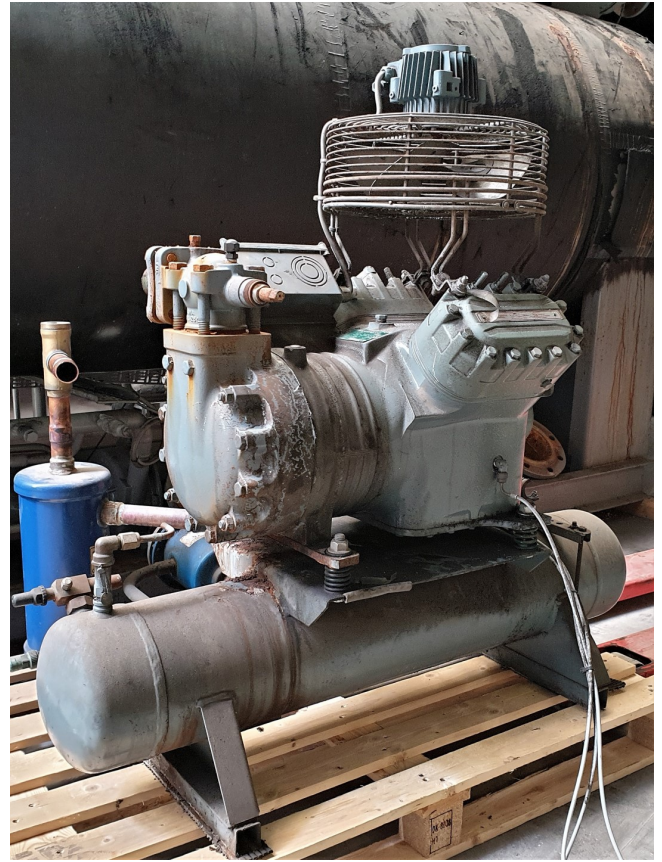


Description

Used DWM D4DT5-220 X AWM/D Tank aggregate

Used DWM Copeland D4DT5-220X-AWM/D tank aggregate. Semi hermetic compressor complete with headfan. Fan specifications are: 1350 RPM with 0.06 kW at 50 Hz, Ø 30 cm. Additionally equipped with an oil separator, liquid receiver and liquid line filter.

*Why choose for HOSBV? We're not only the largest used refrigeration specialist in Europe, but also, we deliver all equipment solely if it has passed our extensive test. Warranty and industrial cleaning are included in your purchase.
*If requested we are happy to arrange your shipment.





| V ²³⁰ | | Hz | min-1 | kW | A |
|------------------|----|------|-------|-----------|---|
| Δ220-Y380 | 50 | 1350 | 0,06 | 0,5/0,3 | |
| Y440 | 60 | 1660 | 0,06 | 0,3 | |
| Δ220/Y380 | 60 | 1610 | 0,06 | 0,45/0,25 | |

VDE 0530 Gefertigt von LEROY-SOMER